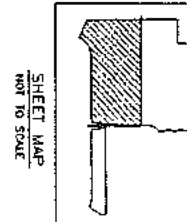
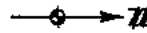


PROPOSED DATE - OCTOBER 27, 2003
 BRAD E. G. OLIVER
 LICENSED PROFESSIONAL SURVEYOR NO. 49301
 BRAD E. G. OLIVER
 LICENSED PROFESSIONAL SURVEYOR NO. 49301
 BRAD E. G. OLIVER, INC.
 1000 W. BROADWAY, SUITE 100
 ANN ARBOR, MICHIGAN 48116
 (810) 275-8800

SURVEY PLAN
 MANORS AT CENTRAL PARK CONDOMINIUM

3



DATE	2003/10/27
BY	BRAD E. G. OLIVER
CHECKED BY	BRAD E. G. OLIVER
SCALE	AS SHOWN
PROJECT	MANORS AT CENTRAL PARK CONDOMINIUM SURVEY PLAN
CLIENT	SHELBY TOWNSHIP
LOCATION	MACOMB COUNTY, MICHIGAN
DATE	2003/10/27
BY	BRAD E. G. OLIVER
CHECKED BY	BRAD E. G. OLIVER
SCALE	AS SHOWN
PROJECT	MANORS AT CENTRAL PARK CONDOMINIUM SURVEY PLAN
CLIENT	SHELBY TOWNSHIP
LOCATION	MACOMB COUNTY, MICHIGAN

DATE	2003/10/27
BY	BRAD E. G. OLIVER
CHECKED BY	BRAD E. G. OLIVER
SCALE	AS SHOWN
PROJECT	MANORS AT CENTRAL PARK CONDOMINIUM SURVEY PLAN
CLIENT	SHELBY TOWNSHIP
LOCATION	MACOMB COUNTY, MICHIGAN

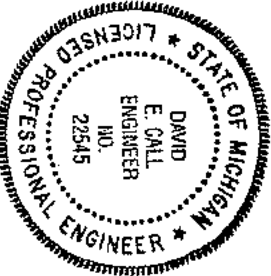
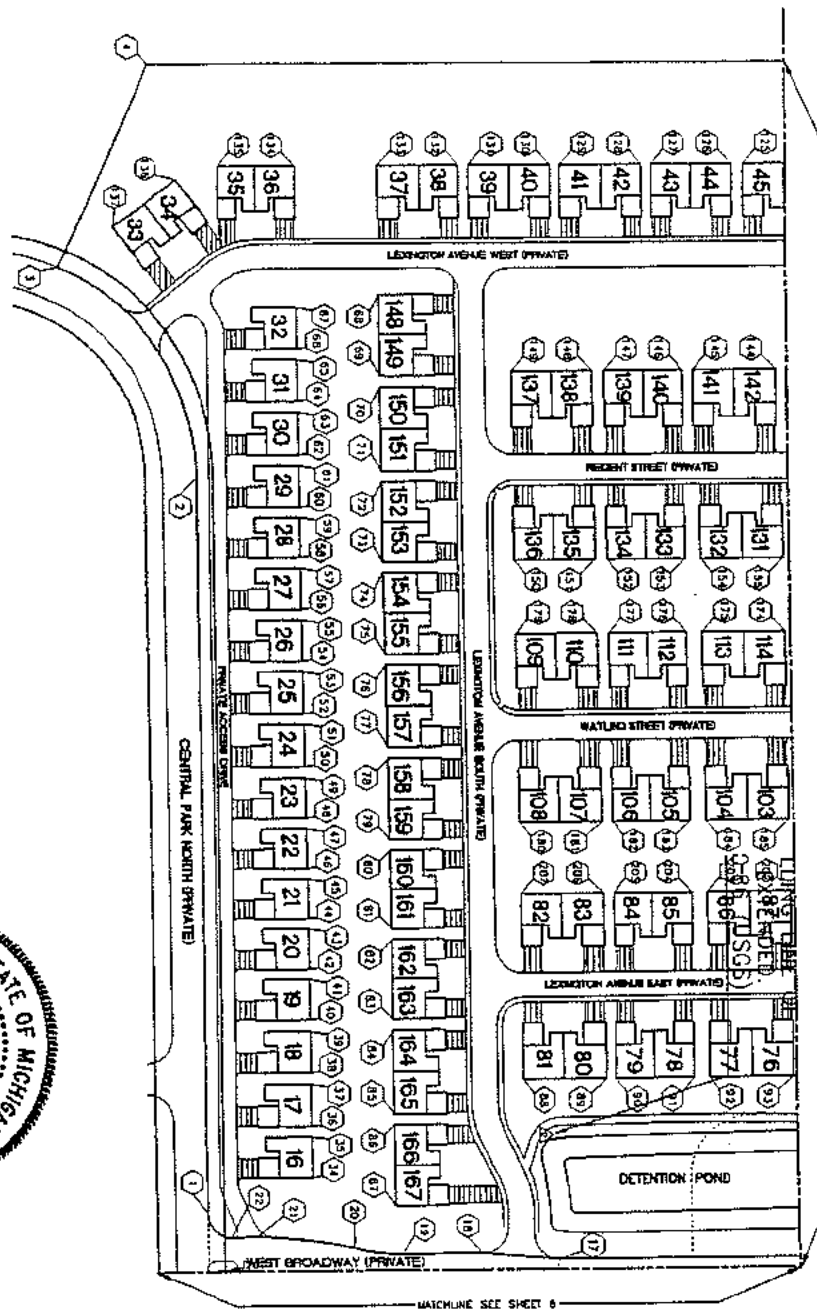
ATWELL-HICKS, INC.
 Civil Engineering - Surveying
 Planning - Environmental Services

Ann Arbor, MI 734 904 4000 Brighton, MI 610 223 6000 Macomb County, MI 584 754 9800 Farmington Hills, MI 526 877 9800

LEGEND

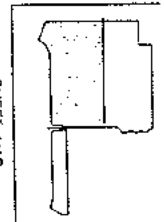
	COORDINATE POINT
	GENERAL COMMON ELEMENT
	UNIT OF OWNERSHIP
	UNIT NUMBER

NOTE:
 1. ALL BUILDINGS & IMPROVEMENTS AS SHOWN ON THIS SHEET MUST BE BUILT.
 2. THE PURPOSE OF THIS SITE PLAN IS FOR BUILDING LOCATIONS WITH OWNERSHIP UNITS ARE SHOWN ON SHEETS 19 THROUGH 22.
 3. SEE SHEET 9 FOR COORDINATE VALUES.

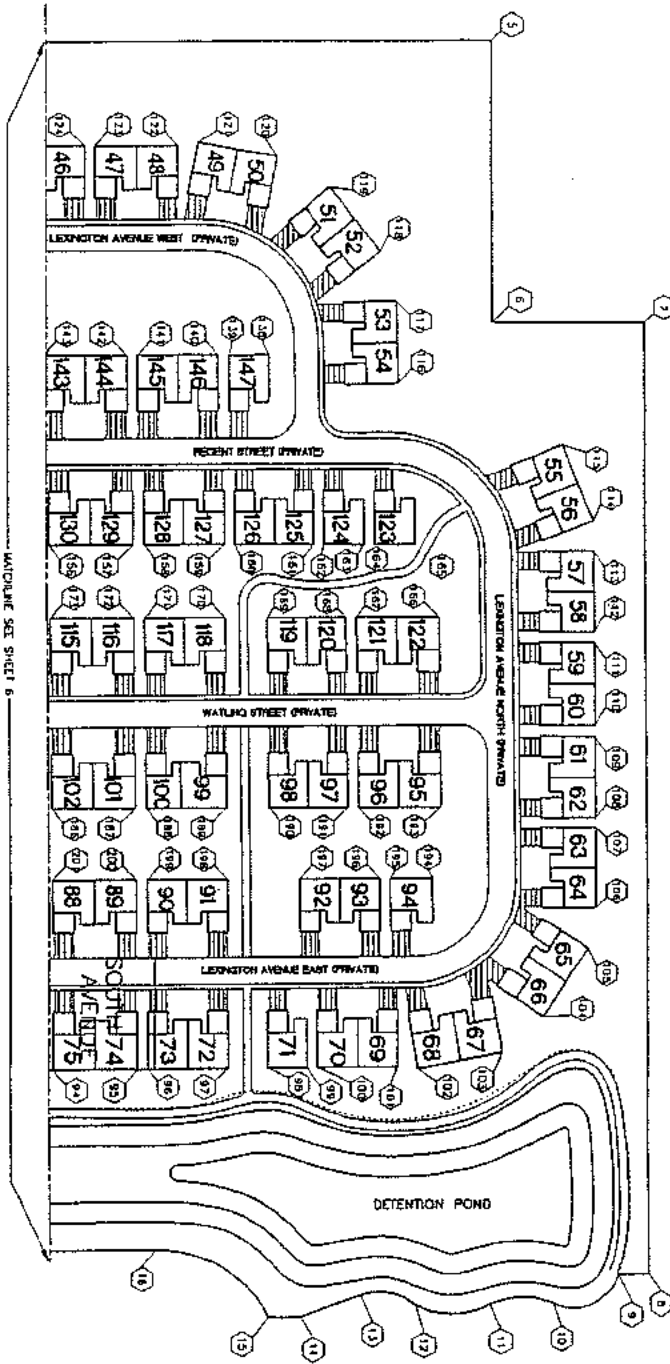


PROPOSED DATE - OCTOBER 27, 2003
 DAVID E. GAHL
 LICENSED PROFESSIONAL ENGINEER NO. 22545
 10000 W. HAWTHORNE AVENUE, SUITE 100
 BIRMINGHAM, MICHIGAN 48116
 (810) 225-5000

SITE PLAN
 MANORS AT CENTRAL PARK CONDOMINIUM



	SECTION 21 TOWNSHIP 3 NORTH AND 17 EAST SHELBY TOWNSHIP MACOMB COUNTY MICHIGAN	ATWELL-HICKS, INC. Civil Engineering • Surveying Planning • Environmental Services 400 WEST 56 Street, St. Joseph, MI 49785-4000 810 223 8000 288 796 1600 430 377 000
	SHEET NO. 6 PROJECT NO. 03-001	SHEET NO. 6 PROJECT NO. 03-001

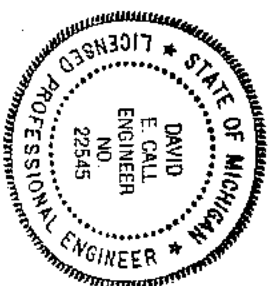


LEGEND

(18)	CORNERSTONE POINT
(19)	STANDARD COMMON ELEMENT
(20)	LIMITED COMMON ELEMENT
(21)	UNIT OF OWNERSHIP
(27)	UNIT NUMBER

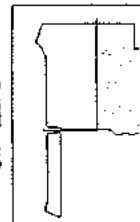
NOTE:

1. ALL BUILDINGS & IMPROVEMENTS AS SHOWN ON THIS SHEET SHALL BE BUILT.
2. THE PLACEMENT OF THIS SITE PLAN IS FOR AUC SHOWN ON SHEETS 1 & THROUGH 22.
3. SEE SHEET 9 FOR CORNERSTONE VALUES.

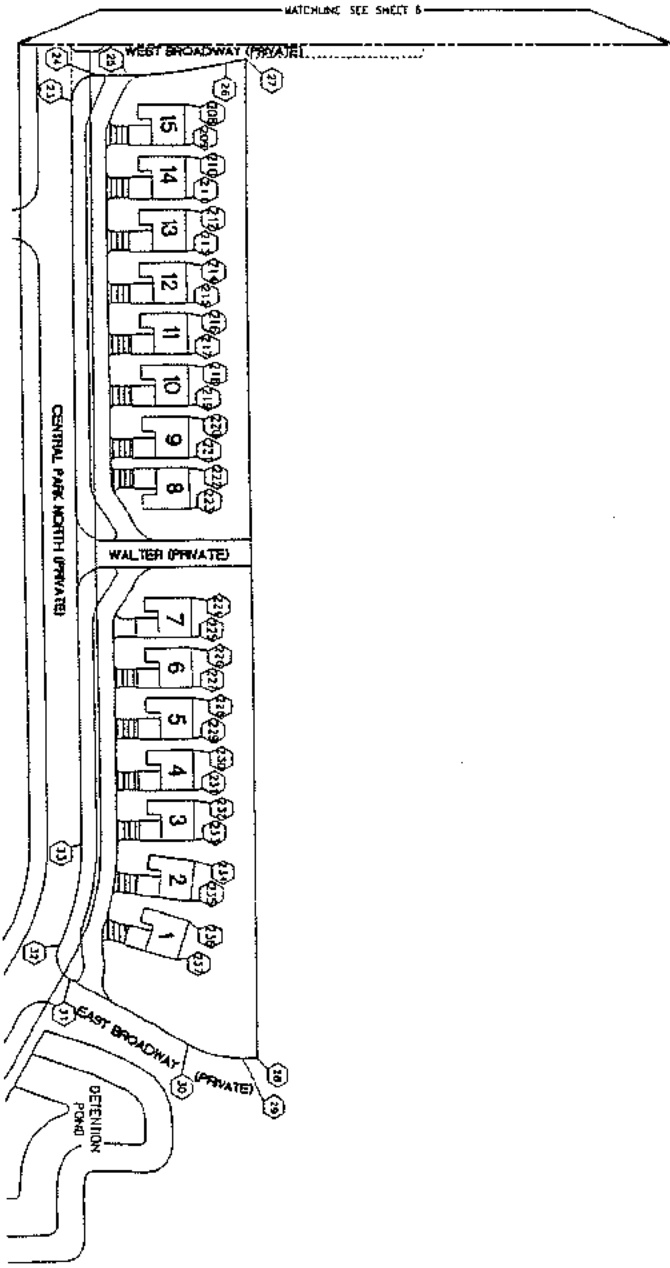


SITE PLAN
 MANORS AT CENTRAL PARK CONDOMINIUM
 7

PROPOSED DATE - OCTOBER 27, 2003
 DAVID E. CALL
 E. CALL
 ENGINEER
 NO. 22545
 LICENSED PROFESSIONAL ENGINEER
 STATE OF MICHIGAN

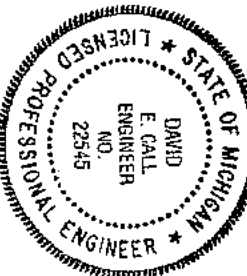


ATWELL-HICKS, INC. Civil Engineering - Surveying Planning - Environmental Services Ann Arbor, MI 734 951 4000 Detroit, MI 810 225 6000 Birmingham, MI 386 786 9600 Naperville, IL 630 577 0000	SHEET 31 10m 3 NORTH, RANGE 12 EAST SHELBY TOWNSHIP MACOMB COUNTY, MICHIGAN	SHEET NO. 7 SHEET TITLE MANORS AT CENTRAL PARK CONDOMINIUM SITE PLAN	SHEET NO. 6 SHEET TITLE MANORS AT CENTRAL PARK CONDOMINIUM SITE PLAN
	SHEET NO. 8 SHEET TITLE MANORS AT CENTRAL PARK CONDOMINIUM SITE PLAN	SHEET NO. 9 SHEET TITLE MANORS AT CENTRAL PARK CONDOMINIUM SITE PLAN	SHEET NO. 10 SHEET TITLE MANORS AT CENTRAL PARK CONDOMINIUM SITE PLAN



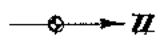
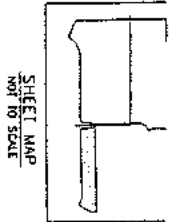
LEGEND

	COORDINATE POINT
	GENERAL COMMON ELEMENT
	LIMITED COMMON ELEMENT
	LIMITS OF OWNERSHIP
	UNIT NUMBER



SITE PLAN
MANORS AT CENTRAL PARK CONDOMINIUM

PROPOSED DATED - OCTOBER 27, 2003
 DAVID E. CALL
 ENGINEER
 NO. 22545
 1327 INDEPENDENT WAY, SUITE 100
 ANN ARBOR, MI 48106-4000
 (313) 225-4000



8

DATE	NO.	DESCRIPTION
10/27/03	1	ISSUED FOR PERMIT
11/10/03	2	REVISED PER COMMENTS
11/10/03	3	REVISED PER COMMENTS
11/10/03	4	REVISED PER COMMENTS
11/10/03	5	REVISED PER COMMENTS
11/10/03	6	REVISED PER COMMENTS
11/10/03	7	REVISED PER COMMENTS
11/10/03	8	REVISED PER COMMENTS
11/10/03	9	REVISED PER COMMENTS
11/10/03	10	REVISED PER COMMENTS
11/10/03	11	REVISED PER COMMENTS
11/10/03	12	REVISED PER COMMENTS
11/10/03	13	REVISED PER COMMENTS
11/10/03	14	REVISED PER COMMENTS
11/10/03	15	REVISED PER COMMENTS
11/10/03	16	REVISED PER COMMENTS
11/10/03	17	REVISED PER COMMENTS
11/10/03	18	REVISED PER COMMENTS
11/10/03	19	REVISED PER COMMENTS
11/10/03	20	REVISED PER COMMENTS
11/10/03	21	REVISED PER COMMENTS
11/10/03	22	REVISED PER COMMENTS
11/10/03	23	REVISED PER COMMENTS
11/10/03	24	REVISED PER COMMENTS
11/10/03	25	REVISED PER COMMENTS
11/10/03	26	REVISED PER COMMENTS
11/10/03	27	REVISED PER COMMENTS
11/10/03	28	REVISED PER COMMENTS
11/10/03	29	REVISED PER COMMENTS
11/10/03	30	REVISED PER COMMENTS

OWNER SABLE REALTY VENTURES - SHELBY, L.L.C.	SECTION 21
MANORS AT CENTRAL PARK CONDOMINIUM SITE PLAN	FROM 5 NORTH RANGE 12 EAST
	SHELFET OWNERSHIP
	MADISON COUNTY, MICHIGAN

ATWELL-HICKS & IN
 Civil Engineering • Surveying
 Planning • Environmental Services

Ann Arbor, MI 734 524 4000 Easton, MI 810 225 0000 Farmington Hills, MI 584 785 8800 Macomb, MI 584 785 5777

COORDINATE TABLE

Table with 3 columns: COORD. NO., NORTHING, EASTING. Rows 1-32.

Table with 3 columns: COORD. NO., NORTHING, EASTING. Rows 33-64.

Table with 3 columns: COORD. NO., NORTHING, EASTING. Rows 65-96.

Table with 3 columns: COORD. NO., NORTHING, EASTING. Rows 97-128.

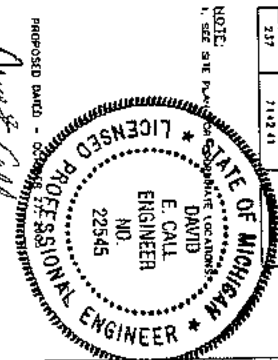
Table with 3 columns: COORD. NO., NORTHING, EASTING. Rows 129-160.

Table with 3 columns: COORD. NO., NORTHING, EASTING. Rows 161-192.

Table with 3 columns: COORD. NO., NORTHING, EASTING. Rows 193-205.

COORDINATE PLAN
MANORS AT CENTRAL PARK CONDOMINIUM

PROPOSED OWNER: SHELL REALTY VENTURES - SHELBY, LLC
MANORS AT CENTRAL PARK CONDOMINIUM COORDINATE PLAN

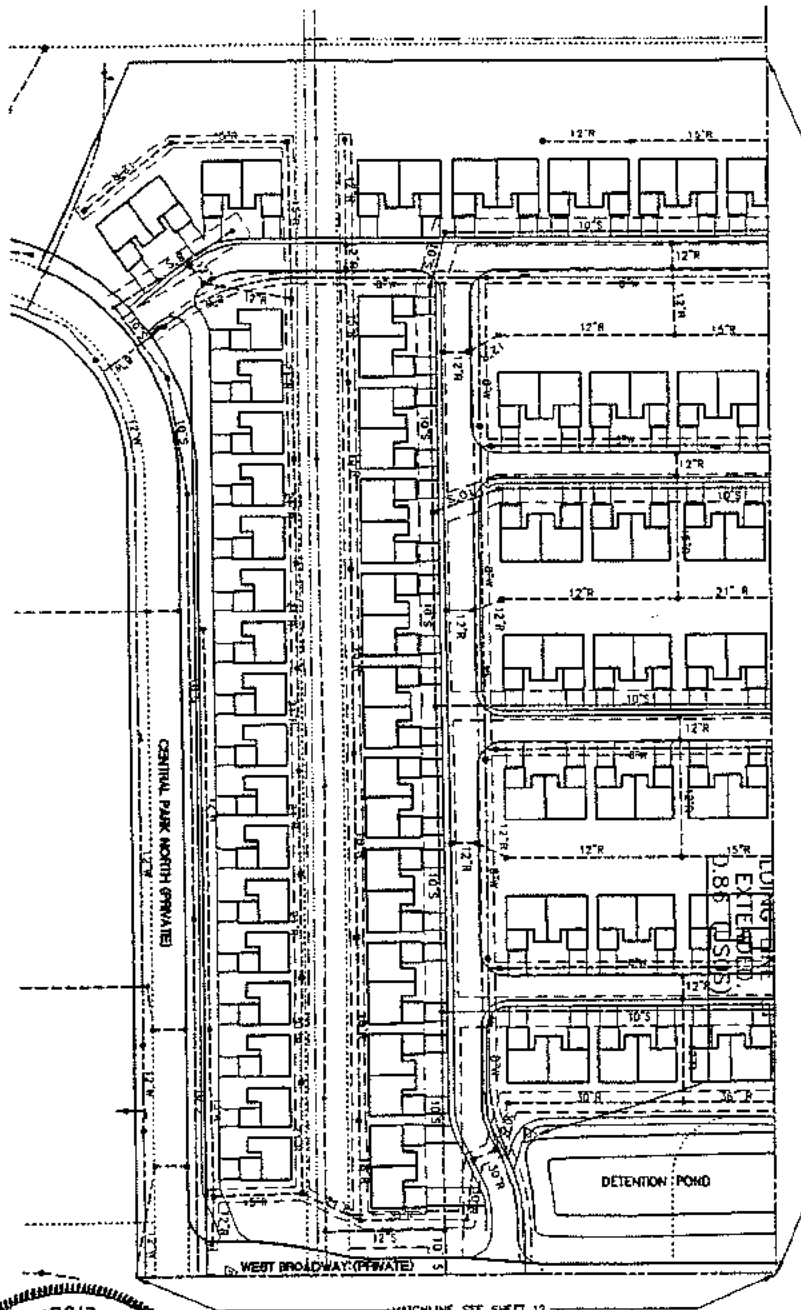


NOTE: SEE SHEET NO. 1 FOR LOCATION OF THIS SHEET.

MANORS AT CENTRAL PARK CONDOMINIUM COORDINATE PLAN

ATWELL-HICKS INC. 1204 N. NORTH AVENUE, SUITE 100, SHELBY TOWNSHIP, MICHIGAN 48166

LEGEND	
EXISTING	PROPOSED
STORM	S
SANITARY	R
WATER	W
OVERHEAD ELECTRIC	O
UNDERGROUND ELECTRIC	U
GAS	G
OVERHEAD TELEPHONE	OT
UNDERGROUND TELEPHONE	UT
UNDERGROUND CABLE TV	UC
MANHOLE	M
CATCH BASIN	C
STRUCTURE	STR
CITY UTILITY POLE	UTP
VALVE	V

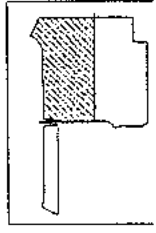


MATCHLINE SEE SHEET 11

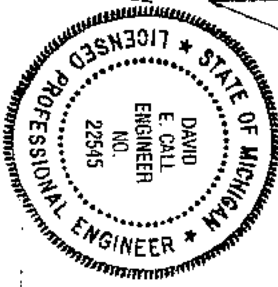
MATCHLINE SEE SHEET 12

NOTES:

1. THE LOCATION OF ALL UTILITIES IS APPROXIMATE.
2. ALL UNITS TO BE SERVICED WITH PUBLIC SANITARY SEWER AND WATERMAIN. INFORMATION SHOWN IS FROM APPROVED CONSTRUCTION PLANS.
3. STORM SEWER LOCATIONS OBTAINED FROM APPROVED CONSTRUCTION PLANS.
4. ALL UNITS TO BE SERVICED WITH CABLE, ELECTRIC, GAS AND TELEPHONE.
5. UTILITIES FOR ALL UNITS SHOWN ON THIS PLAN MUST BE BUILT.
6. FINAL UTILITY LOCATIONS FOR GAS, ELECTRIC, TELEPHONE AND CABLE TELEVISION ARE NOT SHOWN HEREON.
7. ALL SANITARY SEWER LEADS ARE 6" IN DIAMETER.
8. ALL UTILITY SEWER LOCATIONS ARE TO BE ON THE STRUCTURE WHICH IT IS BUILT AND/OR WITHIN THE UNIT BOUNDARIES.



SHEET MAP NOT TO SCALE



PROPOSED DATE - OCTOBER 21, 2003

David E. Call

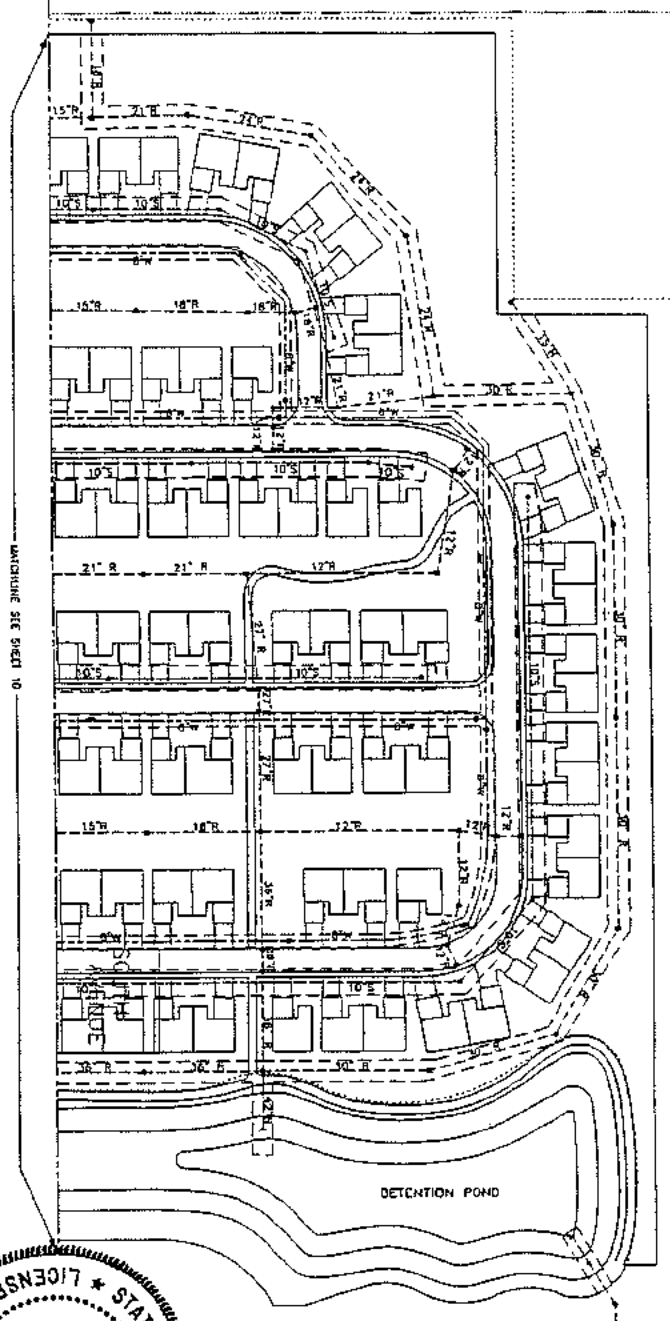
DAVID E. CALL
 LICENSED PROFESSIONAL ENGINEER NO. 22545
 1927 HENCO ROAD, SUITE 100
 ANN ARBOR, MICHIGAN 48106
 (810) 224-6820

UTILITY PLAN
 MANORS AT CENTRAL PARK CONDOMINIUM

10

	SHEET: REALTY VENTURES - SHELBY, L.L.C. MANORS AT CENTRAL PARK CONDOMINIUM UTILITY PLAN	SECTION 31 1000' X NORTH RANGE 12' EAST SHELBY TOWNSHIP MACOMB COUNTY, MICHIGAN	ATWELL-HICKS, INC. Civil Engineering • Landscaping Planning • Environmental Services Ann Arbor, MI 734 994 4000 Shelby, MI 810 225 8800 Farmington Hills, MI 586 784 8800 Macomb, MI 580 577 0000
	DATE: 10/21/03 DRAWN BY: [blank] CHECKED BY: [blank] PROJECT NO.: [blank]		

LEGEND	
EXISTING	PROPOSED
STORM	STORM
SANITARY	SANITARY
WATER	WATER
UNDERGROUND ELECTRIC	UNDERGROUND ELECTRIC
GAS	GAS
OVERHEAD TELEPHONE	OVERHEAD TELEPHONE
UNDERGROUND TELEPHONE	UNDERGROUND TELEPHONE
ELECTRIC, & CABLE TV	ELECTRIC, & CABLE TV
MANHOLE	MANHOLE
CATCH BASIN	CATCH BASIN
CLEANOUT	CLEANOUT
UTILITY POLE	UTILITY POLE
VALVE	VALVE



MANHOLE SEE SHEET 10

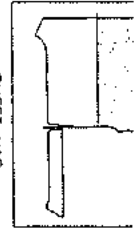
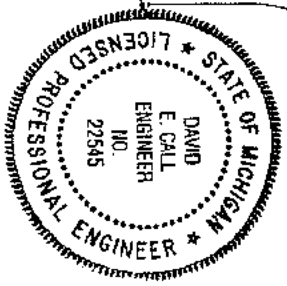
NOTES:

1. THE LOCATION OF ALL UNITS IS APPROXIMATE.
2. ALL UNITS TO BE SERVED WITH PUBLIC SANITARY SEWER AND WATERMAIN. INFORMATION SHOWN IS FROM APPROVED CONSTRUCTION PLANS.
3. STORM SEWER LOCATIONS OBTAINED FROM APPROVED CONSTRUCTION PLANS.
4. ALL UNITS TO BE SERVED WITH CABLE, ELECTRIC, GAS AND TELEPHONE.
5. UNITS FOR ALL UNITS SHOWN ON THIS PLAN MUST BE BUILT.
6. FINAL UTILITY LOCATIONS FOR GAS, ELECTRIC, TELEPHONE AND CABLE TELEVISION ARE NOT SHOWN HEREIN.
7. ALL SANITARY SEWER LINES ARE 6" IN DIAMETER.
8. ALL UTILITY WETER LOCATIONS WILL BE ON THE STRUCTURE MARK II IS BUILT AND/OR WITHIN THE UNIT BOUNDARIES.

UTILITY PLAN
MANORS AT CENTRAL PARK CONDOMINIUM

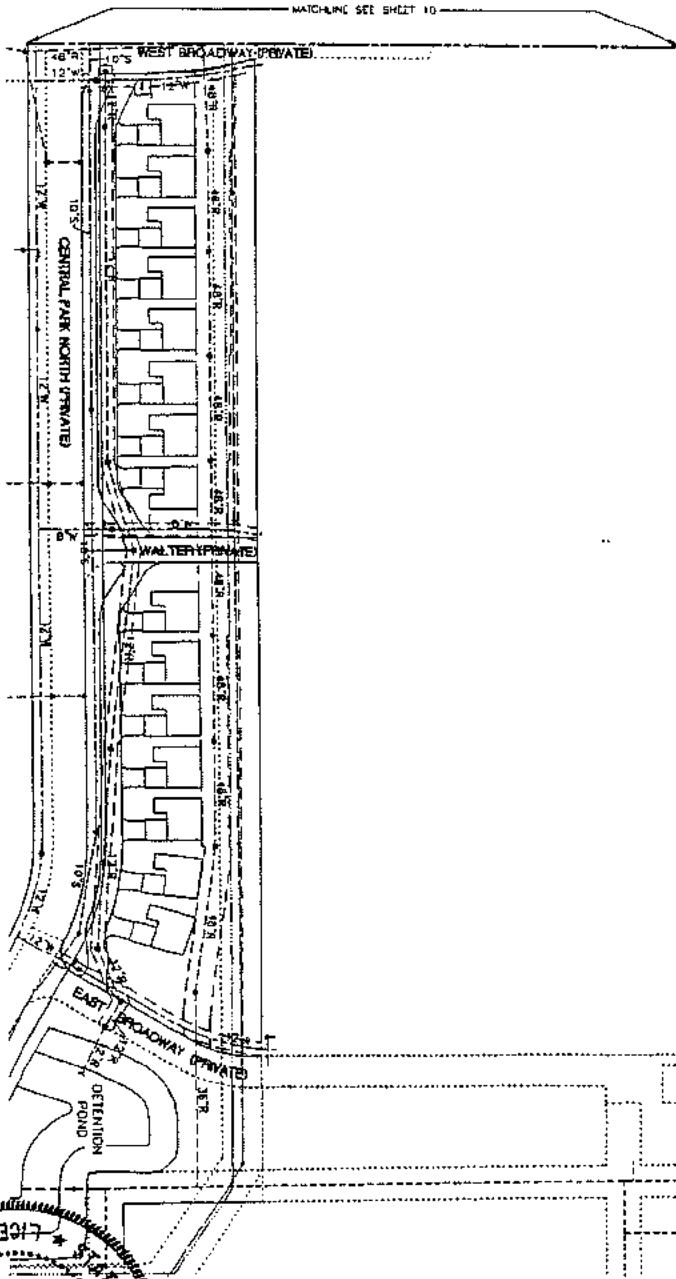
PROPOSED DATED - OCTOBER 27, 2003

DAVID E. CHALL
LICENSED PROFESSIONAL ENGINEER NO. 22545
ATWELL-HICKS & IN
927 NICHOLS AVE. SUITE 100
ANN ARBOR MI 48101-225-5800

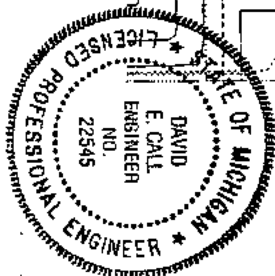


	SECTION 21 1000 2 NORTH RANGE 12 EAST SHELBY TOWNSHIP MACOMB COUNTY MICHIGAN	ATWELL-HICKS & IN Civil Engineers • Surveying Planning • Environmental Services 734 934 4000 810 225 6000 585 785 9800 530 577
	SCALE: AS SHOWN - SHELBY I.L.C. MANORS AT CENTRAL PARK CONDOMINIUM UTILITY PLAN	SHEET 11 OF 11

EXISTING	DESCRIPTION	PROPOSED
---	STORM	---
---	SANITARY	---
---	WATER	---
---	OVERHEAD ELECTRIC	---
---	GAS	---
---	UNDERGROUND TELEPHONE	---
---	ELECTRIC, & CABLE T.V.	---
---	CATCH BASIN	---
---	HYDRANT	---
---	UTILITY POLE	---
---	VALVE	---



- NOTES:
1. THE LOCATION OF ALL UNITS IS APPROXIMATE.
 2. ALL UNITS TO BE SERVED WITH PUBLIC SANITARY SEWER AND WATERMAIN. INFORMATION SHOWN IS FROM APPROVED CONSTRUCTION PLANS.
 3. STORM SEWER LOCATIONS DERIVED FROM APPROVED CONSTRUCTION PLANS.
 4. ALL UNITS TO BE SERVED WITH CABLE, ELECTRIC, GAS AND TELEPHONE.
 5. UTILITIES FOR ALL UNITS SHOWN ON THIS PLAN MUST BE BUILT.
 6. POINT UTILITY LOCATIONS FOR GAS, ELECTRIC, TELEPHONE AND CABLE UTILITIES ARE NOT SHOWN HEREON.
 7. ALL SANITARY SEWER LEADS ARE 8" IN DIAMETER.
 8. ALL UTILITY METER LOCATIONS WILL BE ON THE STRUCTURE WHICH IT IS BUILT AND/OR WITHIN THE UNIT BOUNDARIES.



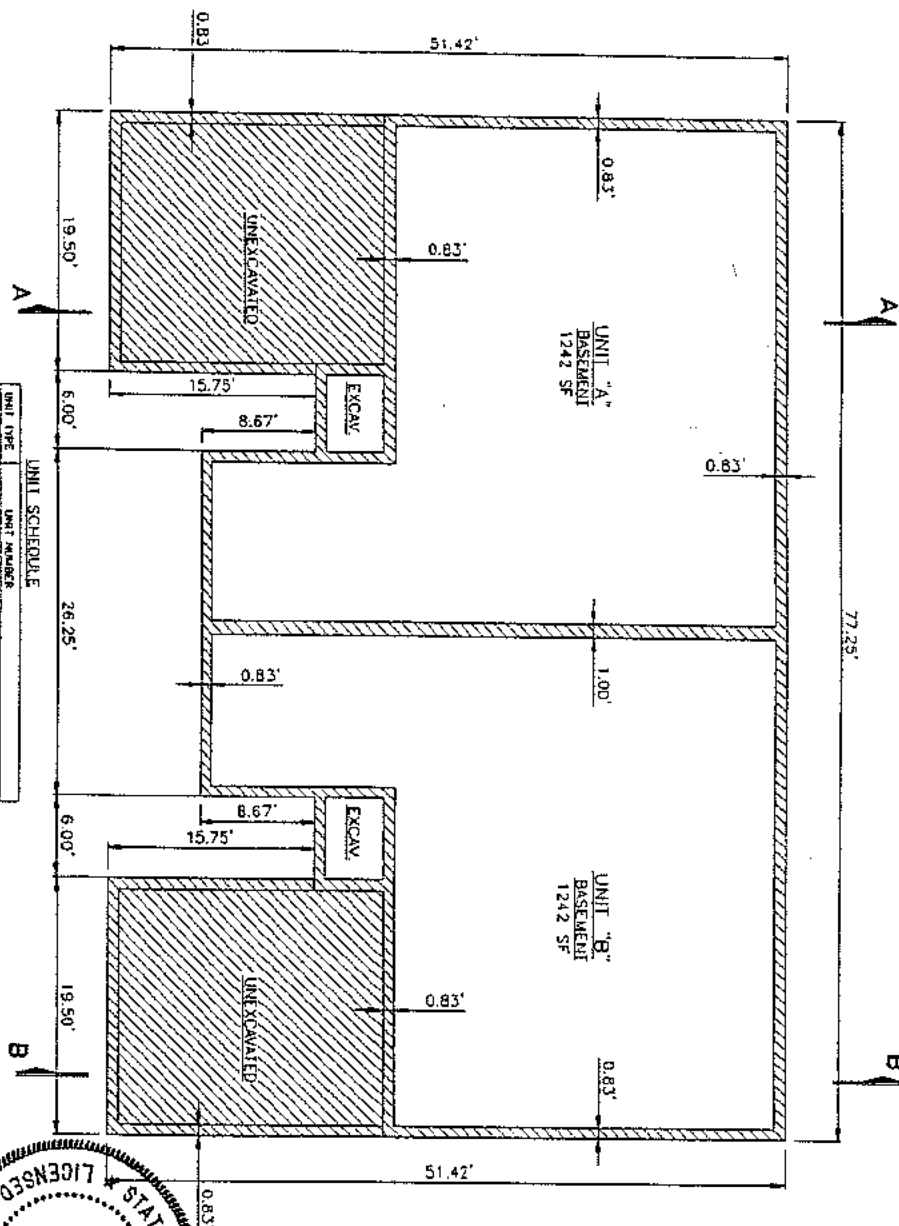
PROPOSED DATED - OCTOBER 27, 2003
 DAVID E. CALL
 LICENSED PROFESSIONAL ENGINEER NO. 22545
 7927 LENOX WAY, SUITE 100
 BIRMINGHAM, MICHIGAN 48116
 (313) 225-6000

UTILITY PLAN
 MANORS AT CENTRAL PARK CONDOMINIUM

SHEET MAP
 NOT TO SCALE

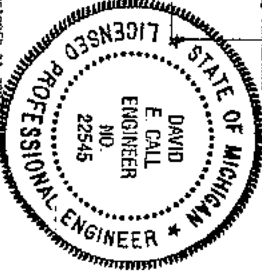
	SECTION 21 MANORS AT CENTRAL PARK CONDOMINIUM UTILITY PLAN	ATWELL-HICKS INC. Civil Engineering • Surveying Planning • Environmental Services 734-924-4000 610-225-6000 564-786-9000 630-377-56
	SHEET MAP NOT TO SCALE	SHELEY TOWNSHIP MACOMB COUNTY, MICHIGAN

- NOTES:
1. ALL EXTERIOR BASEMENT WALLS ARE APPROXIMATELY 0.83'.
 2. DIMENSIONS ON THE UNITS AS SHOWN ON THESE FLOOR PLANS MAY VARY FROM THE DIMENSIONS OF THE UNITS AS CONSTRUCTED.
 3. ALL UNITS SHALL BE CONSTRUCTED WITHOUT ANY OPTIONAL BAY-WINDOWS AND/OR BAY-WINDOWS UNLESS OTHERWISE SPECIFICALLY CONTRACTED AND/OR ORDERED FOR THE CONSTRUCTION OF AN ORIGINAL BAY-WINDOWS AND/OR BAY-OUT WINDOWS.



UNIT SCHEDULE

UNIT TYPE	UNIT NUMBER	
"A"	9, 33, 35, 37, 39, 41, 43, 45, 47, 49, 51, 53, 55, 57, 59, 61, 63, 65, 67, 69, 71, 73, 75, 77, 79, 81, 83, 85, 87, 89, 91, 93, 95, 97, 99, 101, 103, 105, 107, 109, 111, 113, 115, 117, 119, 121, 123, 125, 127, 129, 131, 133, 135, 137, 139, 141, 143, 145, 147, 149, 151, 153, 155, 157, 159, 161, 163, 165, 167	
	"B"	1-7, 9-31, 33, 35, 37, 39, 41, 43, 45, 47, 49, 51, 53, 55, 57, 59, 61, 63, 65, 67, 69, 71, 73, 75, 77, 79, 81, 83, 85, 87, 89, 91, 93, 95, 97, 99, 101, 103, 105, 107, 109, 111, 113, 115, 117, 119, 121, 123, 125, 127, 129, 131, 133, 135, 137, 139, 141, 143, 145, 147, 149, 151, 153, 155, 157, 159, 161, 163, 165, 167



PROPOSED DATE - OCTOBER 27, 2003

DAVID E. CALL
 LICENSED PROFESSIONAL ENGINEER NO. 22545
 7320 WOODLAND DRIVE, SUITE 100
 BIRCHWOOD, MICHIGAN 48415
 (810) 225-6000

MANORS AT CENTRAL PARK CONDOMINIUM

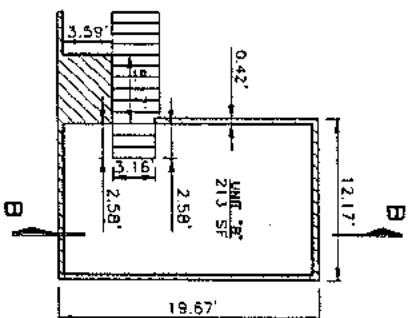
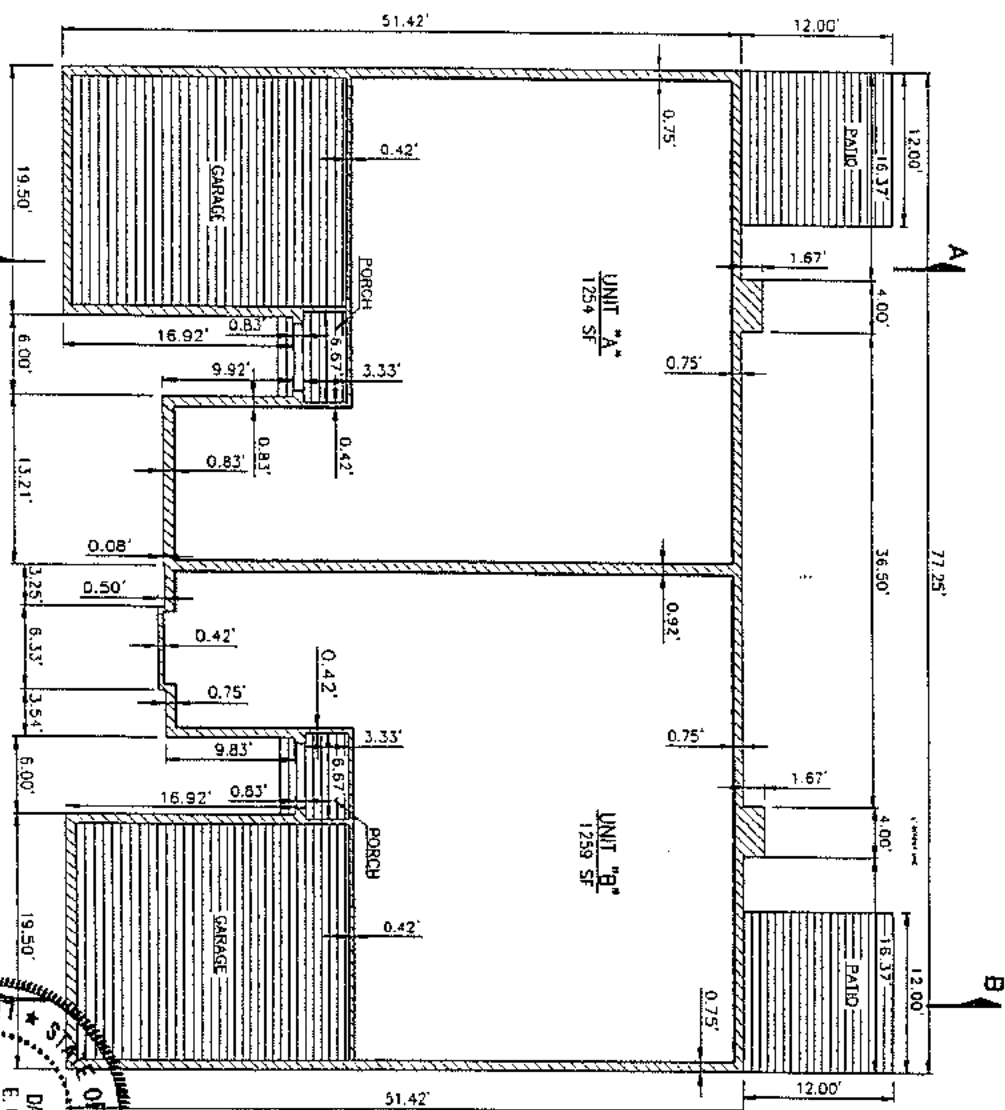
ATWELL-HICKS, INC.
 Civil Engineering & Surveying
 Planning & Environmental Services

7317 75th Avenue, Birmingham, MI 48413
 810 225 6900

13000 Westpark Road, Detroit, MI 48226
 313 769 5600

10000 E. Warren, Detroit, MI 48215
 313 531 0660

MANORS AT CENTRAL PARK CONDOMINIUM
 BASEMENT PLAN
 SECTION 31
 SHELBUR TOWNSHIP
 MACOMB COUNTY, MICHIGAN



UNIT SCHEDULE

UNIT TYPE	UNIT NUMBER	UNIT NUMBER
A	1-1	1
	2-1	2
	3-1	3
	4-1	4
	5-1	5
	6-1	6
	7-1	7
	8-1	8
	9-1	9
	10-1	10
	11-1	11
	12-1	12
B	1-2	13
	2-2	14
	3-2	15
	4-2	16
	5-2	17
	6-2	18
	7-2	19
	8-2	20
	9-2	21
	10-2	22
	11-2	23
	12-2	24

SECOND FLOOR PLAN

- NOTES:**
- ALL EXTERIOR BASEMENT WALLS ARE APPROXIMATELY 9.5" THICK.
 - DIMENSIONS ON THE UNITS AS SHOWN ON THESE FLOOR PLANS MAY VARY FROM THE DIMENSIONS OF THE UNITS AS CONSTRUCTED.
 - ALL UNITS SHALL BE CONSTRUCTED WITHOUT ANY PORTALS, BAY-WINDOWS AND/OR BOX-OUT WINDOWS UNLESS OTHERWISE SPECIFICALLY CONTRACTED WITH THE DEVELOPER FOR THE CONSTRUCTION OF AN OPTIONAL BAY-WINDOWS AND/OR BOX-OUT WINDOWS.

LEGEND
 UNITS COMMON ELEMENT
 GENERAL COMMON ELEMENT
 UNITS OF OWNERSHIP

STATE OF MICHIGAN
 LICENSED PROFESSIONAL ENGINEER
 DAVID E. CALL
 E. CALL
 ENGINEER
 NO. 22545

PROPOSED DATED - OCTOBER 24, 2003

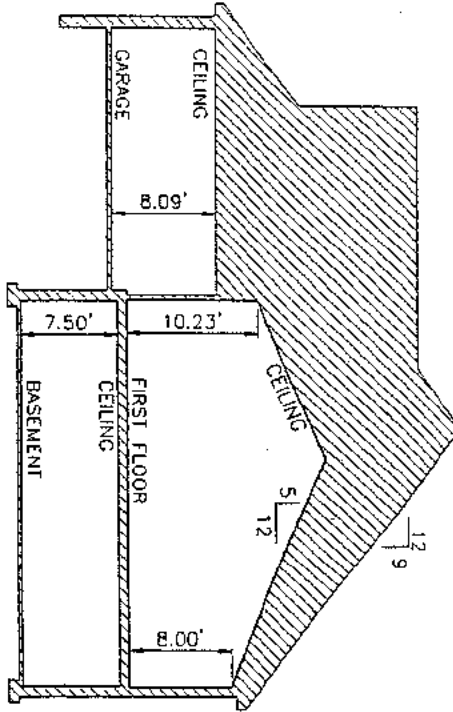
MANORS AT CENTRAL PARK CONDOMINIUM

ATWELL-HICKS INC.
 Civil Engineering - Surveying
 Planning - Landmarking Services

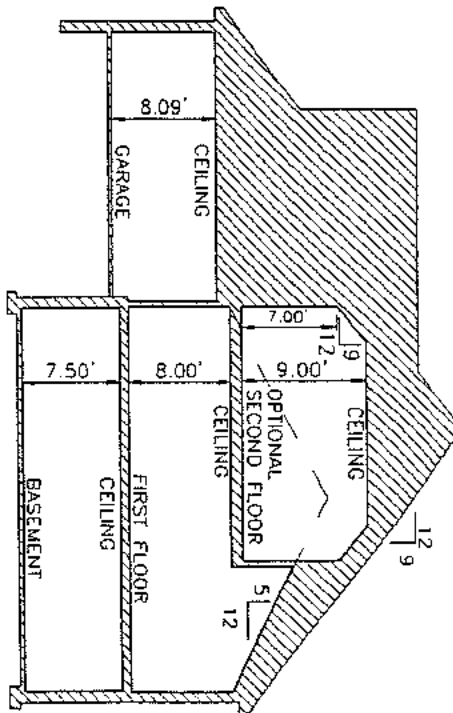
1740 N. W. 10th St., Suite 100, Grand Rapids, MI 49503
 616-944-4000 616-222-8000 266-796-9000 430-877-880

MANORS AT CENTRAL PARK CONDOMINIUM
 FIRST FLOOR & SECOND FLOOR PLANS

DATE: 10/24/03

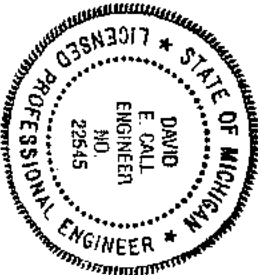
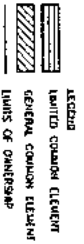


SECTION A-A



SECTION B-B

- NOTES
1. ALL EXTERIOR BASEMENT WALLS ARE APPROXIMATELY 0.03'
 2. DIMENSIONS ON THE UNITS AS SHOWN ON THESE FLOOR PLANS MAY VARY FROM THE DIMENSIONS OF THE UNITS AS CONSTRUCTED.
 3. ALL UNITS WILL BE CONSTRUCTED WITHOUT ANY OPTIONAL BAY-WINDOWS AND/OR BOX-OUT WINDOWS, UNLESS PURCHASER SPECIFICALLY CONTRACTS WITH THE DEVELOPER FOR THE CONSTRUCTION OF AN OPTIONAL BAY-WINDOWS AND/OR BOX-OUT WINDOWS.



PROPOSED DATED - OCTOBER 27, 2003

DAVID E. CALL
 LICENSED PROFESSIONAL ENGINEER NO. 22545
 2000 W. WOODRIDGE AVE. SUITE 100
 BRIGHTON, MICHIGAN 48116
 (810) 223-6000

MANORS AT CENTRAL PARK CONDOMINIUM

15

SHELL REALTY VENTURES - SHELBY, LLC MANORS AT CENTRAL PARK CONDOMINIUM BUILDING CROSS SECTIONS	SHELLBY TOWNSHIP WISCONSIN COUNTY, MICHIGAN	ATWELL-HICKS, INC. Civil Engineering • Surveying Planning • Environmental Services 2001 WOODRIDGE AVE. SUITE 100 BRIGHTON, MI 48116 (810) 223-6000
	SHELLBY TOWNSHIP	
	SHELLBY TOWNSHIP	
	SHELLBY TOWNSHIP	