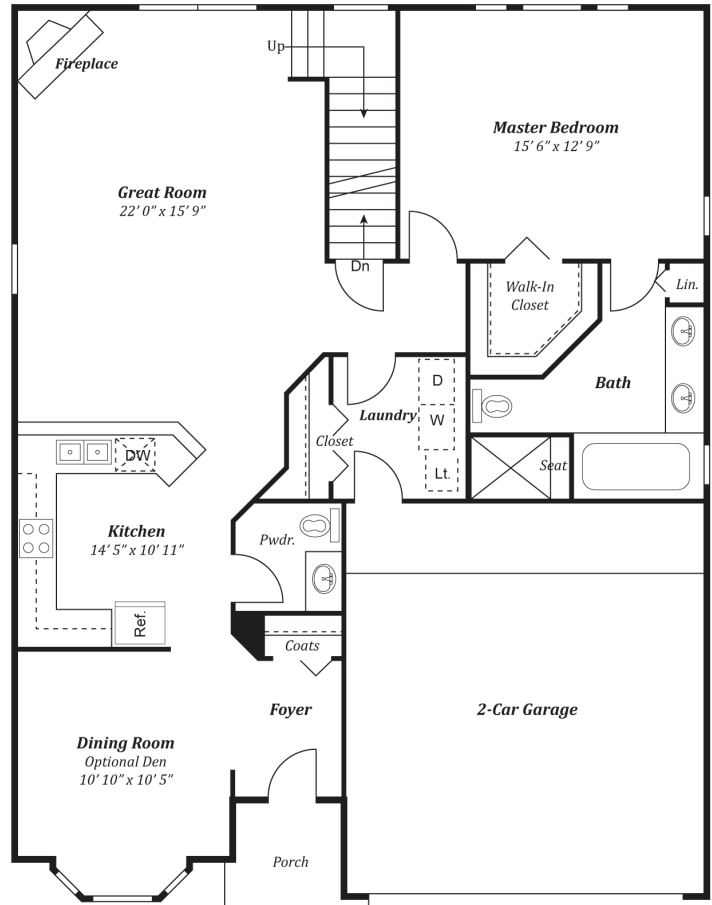
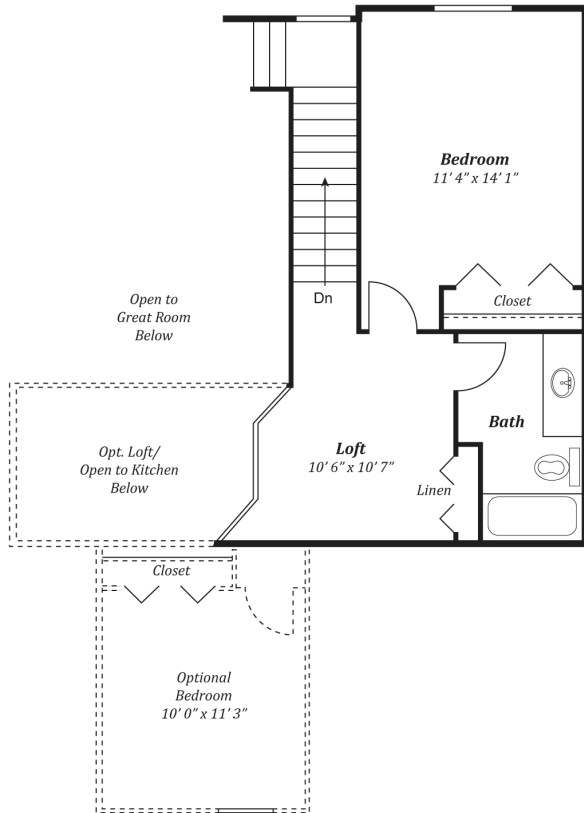


MANORS AT CENTRAL PARK

THE BRENTWOOD III

APPROXIMATELY 1,685-1,970 SQUARE FEET
WITH TWO BEDROOMS (3RD OPTIONAL)

- TWO SPACIOUS BEDROOMS
- SPLIT LEVEL WITH LOFT
- 2 1/2 BATHROOMS
- GREAT ROOM WITH FIREPLACE
- FIRST FLOOR LAUNDRY
- TWO CAR ATTACHED GARAGE



Manors At Central Park | 49879 Lexington Avenue West, Shelby Township, MI 48317 | 586.739.1373 | www.manorscp.com

All information contained herein was accurate at the time of publication. In order to maintain the highest degree of quality and incorporate improvements, we reserve the right to make changes in design, features and options, and/or discontinue floor plans without notice or obligation. Floor plan dimensions and square footages are approximate.